

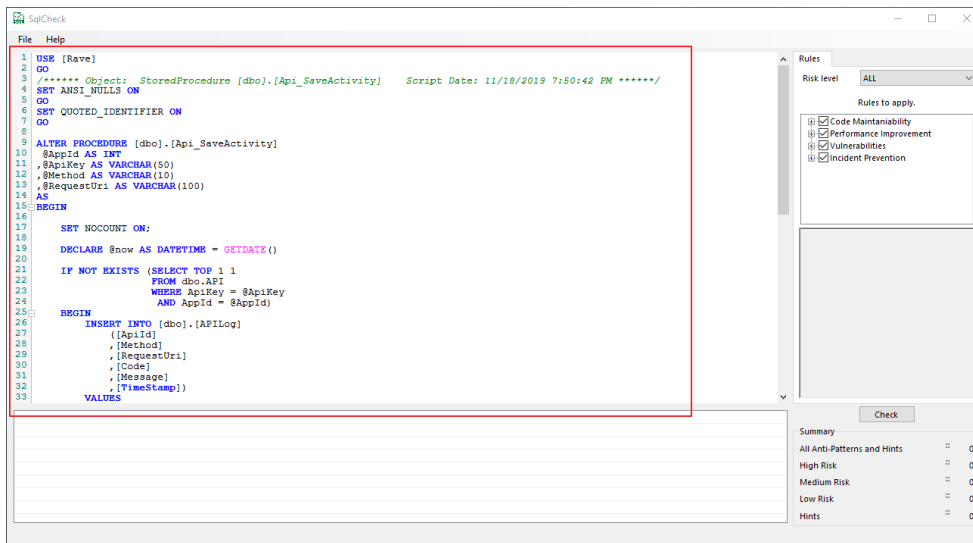
How to perform static code analysis?

In order to perform static code analysis you can follow these steps.

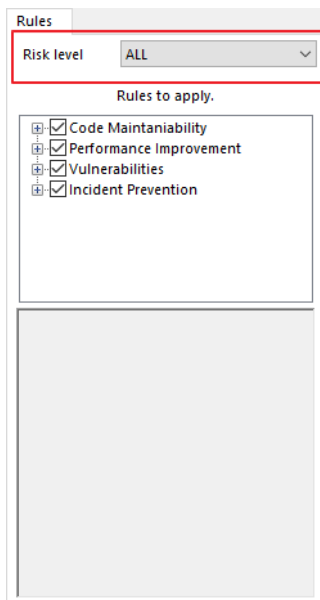
1. Open SQL Check Tool



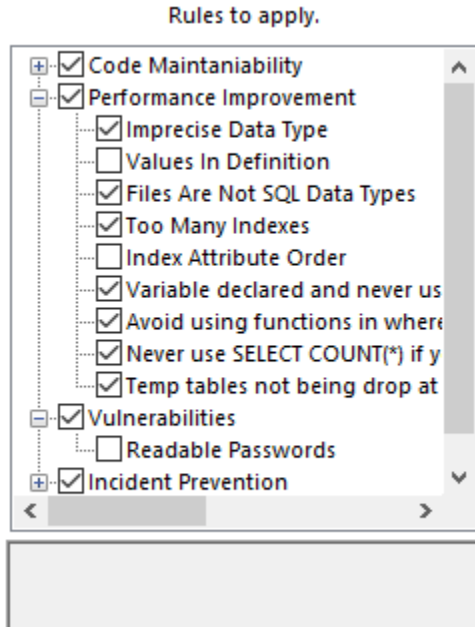
2. Select and copy to clipboard any SQL Code (Ctrl + C) and Paste it on the SQL Check Editor using Ctrl + V.



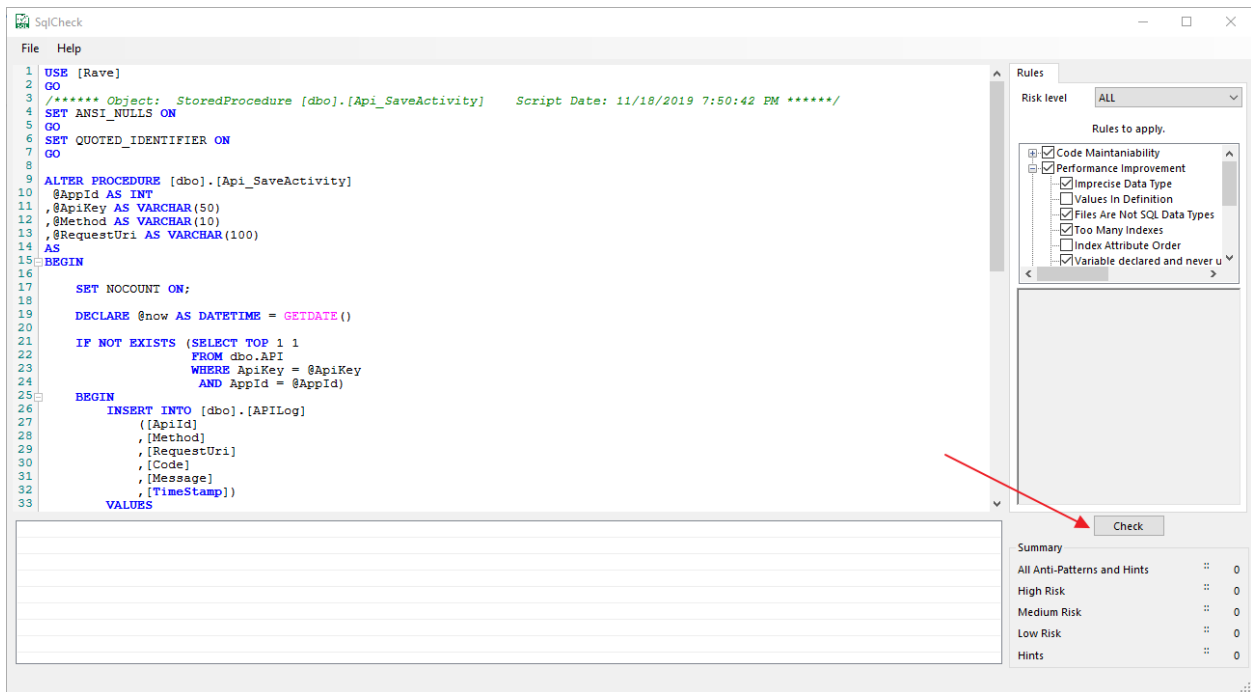
3. Select the desired Risk Level



4. Customize the rules according to the Risk Level selected on the step above.

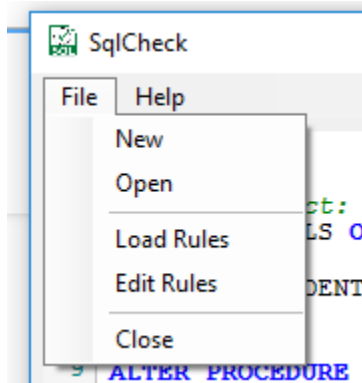


5. Click on Check Button.

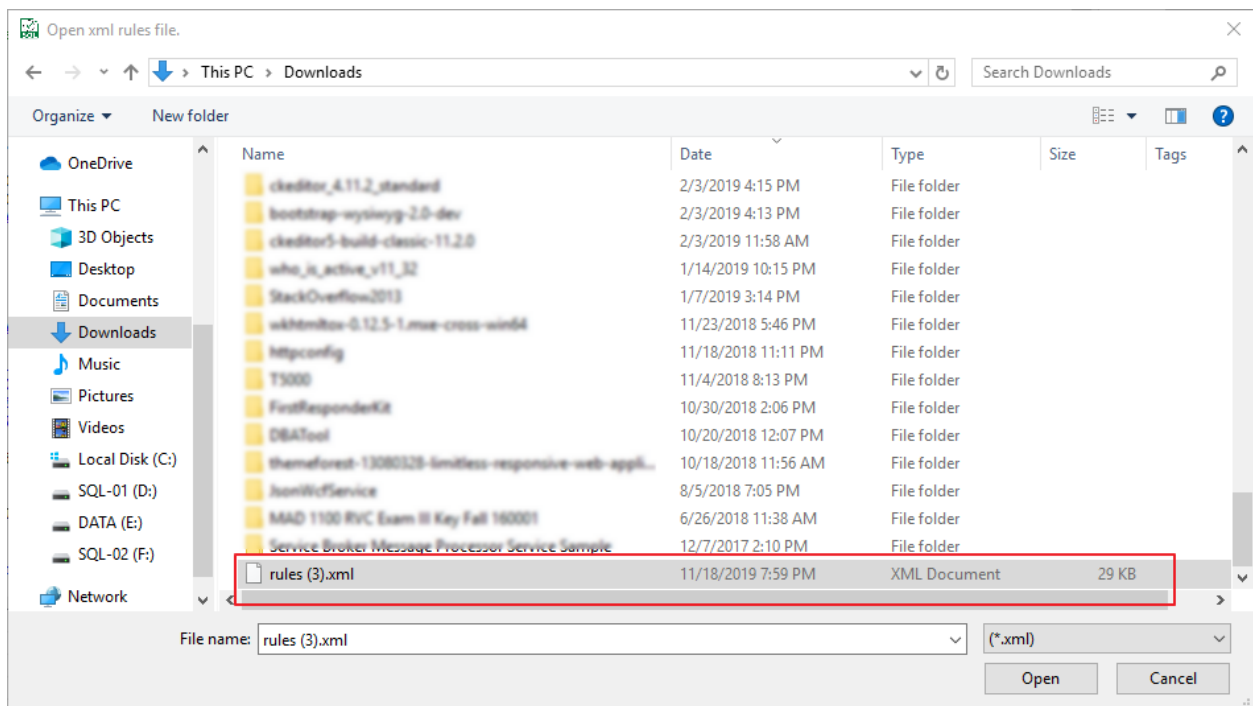


How to open a Rule Files

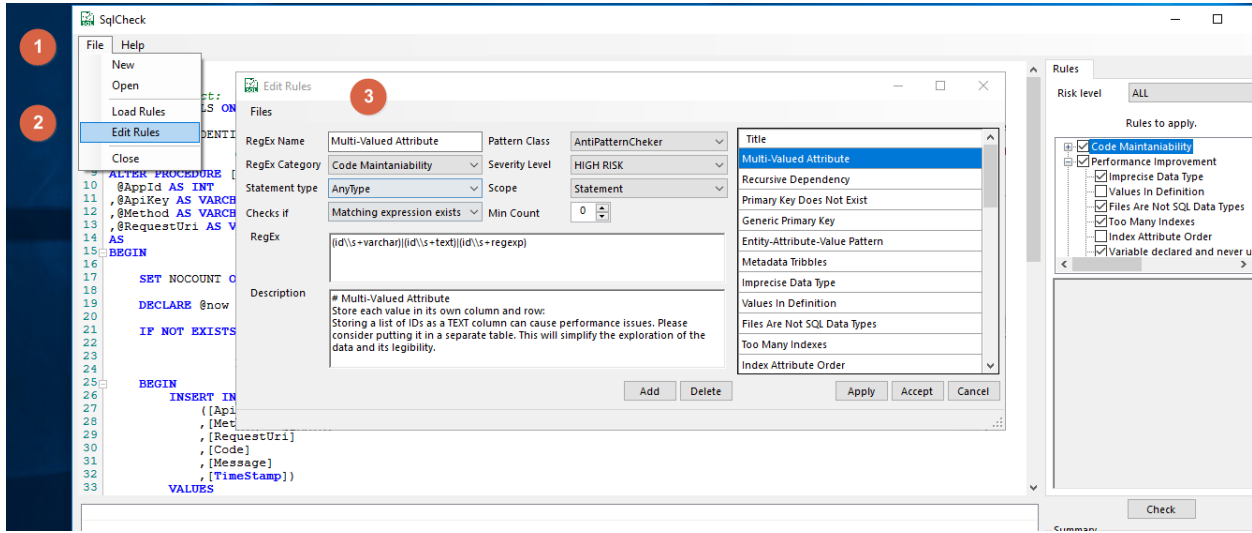
1. Click on File Menu



2. Click on Load Rules, this will prompt a window in order to find a SQL Check rule files, which will be an .XML file.



3. In order to make sure you selected the correct Rules file, please go to Files and the edit rules, which will show the new loaded rules.

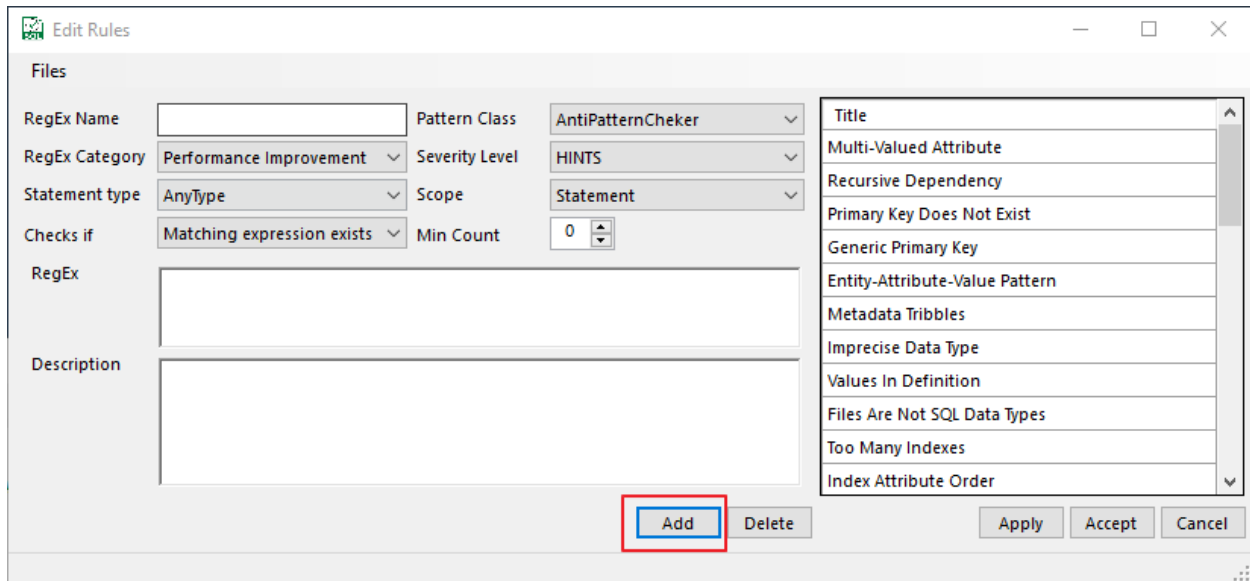


How to create a new Rule

In order to create a new rule please follow the following steps.

As an example we will create a rule that detects the following code "SELECT *"

1. Go to Files Menu and click on Edit Rules
2. Once on the Edit rules windows click on "Add"



3. This will empty the Edit Rules and is ready to start creating your custom Rule, the following image will describe each of the inputs available in order to create a rule.

- **RegEx Name:** Actual Name of the rule
- **RegEx Category:** Category of the Rule
- **Statement Type:** What type of statement will this rule apply to?
- **Check If:** Here you can select if the rule will trigger in the event of if the Regex exists or not.
- **RegEx:** Regex Code
- **Description:** Meaningful description that will help you and your team to identify and understand this rule.
- **Pattern Class:** Type of class of the Pattern
- **Severity Level:** Here you're able to categorize the severity of the rule.
- **Scope:** Will this be applied at statement of script level.
- **Min Count:** Amount of times the statement needs to appear on the query.

Eg:

- **RegEx Name:** Find any SELECT *
- **RegEx Category:** Code Maintaniability
- **Statement type:** AnyType
- **Check If:** Matching Expressions exists
- **Pattern Class:** AntiPatterChecker
- **Severity Level:** High Risk
- **Scope:** Statement
- **Min Count:** 0
- **Regex:** (select\s+\s*)
- **Description:** Never go with "SELECT *"

4. Click on Add and the rule will appear on the Rule List.

How to Edit a Rule

1. Go to Files Menu and click on Edit Rules
2. Once on the Edit Rules windows select an existing rule on the right side panel, let's use as an example the previously created rule called "Find Any SELECT *"
3. Let's do some changes on the actual description box adding an extra text at the end.
4. Once completed click on Apply.

